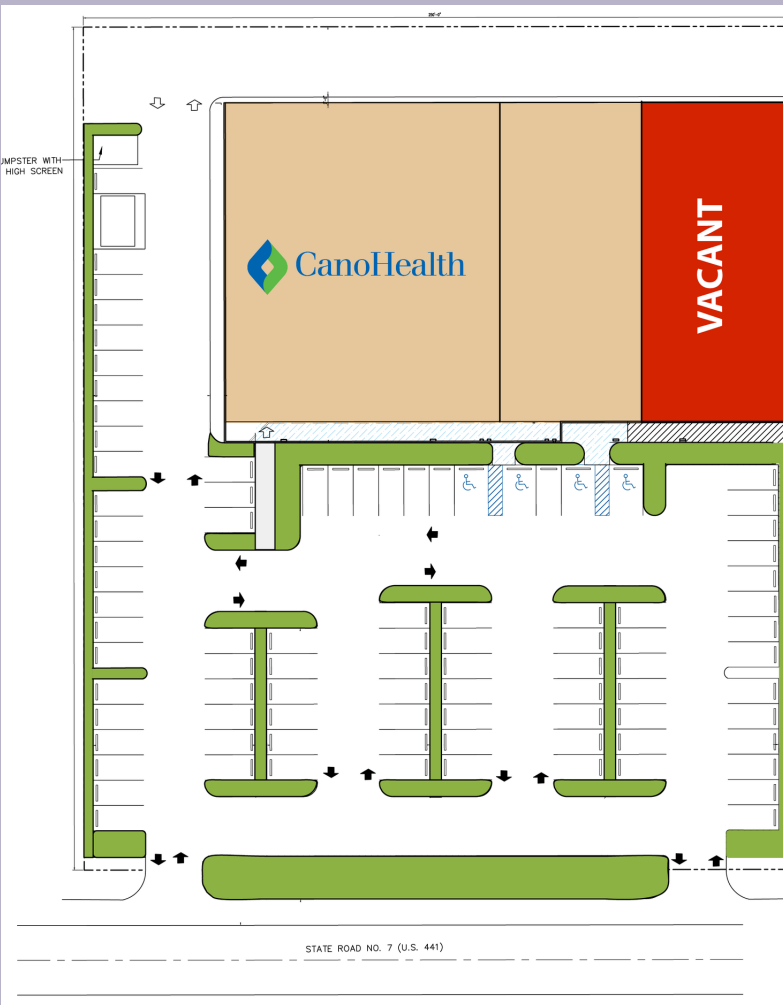
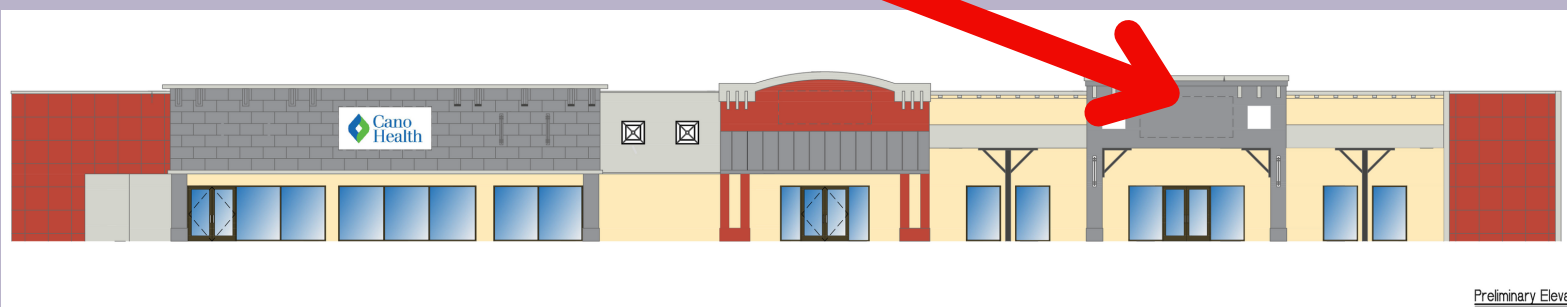


SPACE FOR LEASE

1879 N State Road - Lauderdale

Address: 1879 N SR 7, LAUDERHILL, FL 33313

Available Space 5,644 SF. Endcap



SPACE FEATURES

- + 1 unit remaining endcap for retail or office
- + Signage available
- + Ample parking

51,500 AADT

Annual Average Daily Traffic

Demographics

	1Mile	3Miles	5Miles
Population	29,672	197,222	483,597
Median Household Income <small>(in 2021 inflation adjusted dollars)</small>	\$37,690	\$45,765	\$54,581
Households	10,533	68,428	184,924



For More Information contact Hector Gutierrez
305.527.7170 - Hector.Gutierrez@imcequitygroup.com