



# Leasing Opportunity

## Marlin Commercial Center

Address: 10675 SW 190 Street  
Miami, FL 33157

- Easy Access
- Plenty Of Parking



Nestled in the heart of the South Dade Commercial District is Marlin Commercial Center, having been developed in 2008 and consisting of 65 units, this industrial-flex and office project is made up of three buildings fronting 190 Street.



The property is noted as 10655, 10665 and 10675 SW 190th Street, in unincorporated Miami-Dade County, Florida. More specifically, there are 25 office units having an average size of 631 square feet (SF) and 40 industrial-flex units having an average size of 1,146 square feet (SF).

Property Type: Warehouse  
 County: Miami Dade Count  
 Land Size: 3.31 Acres

Zoning: IU-1  
 Year Built: 2006  
 Gross Leasable Area: 61,079 Sq.Ft

For additional information please contact Hector Gutierrez  
 305-527-7170 or [Hector.Gutierrez@imcequitygroup.com](mailto:Hector.Gutierrez@imcequitygroup.com)

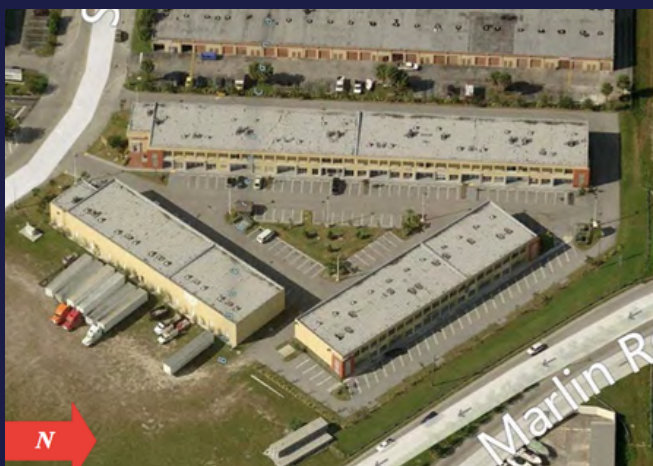
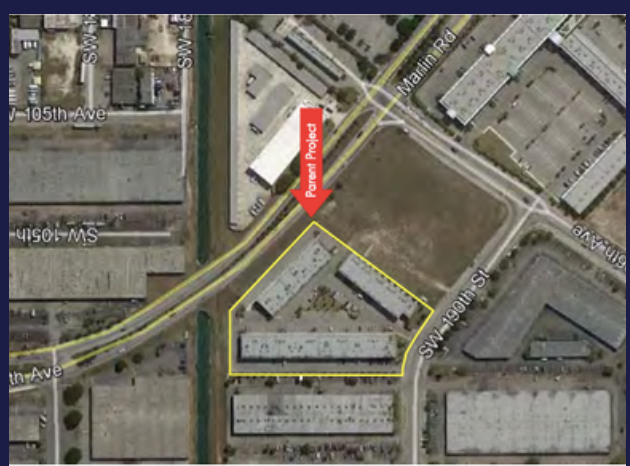


# Leasing Opportunity

## Marlin Commercial Center

Address: 10675 SW 190 Street  
Miami, FL 33157

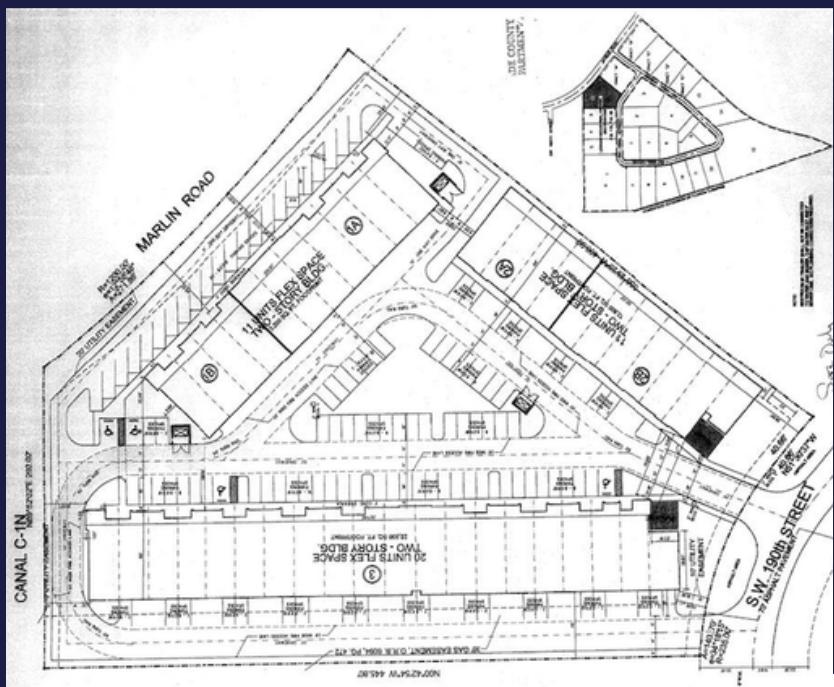
- Easy Access
- Plenty of parking



## Available Units

Total Units : 57  
 Units ranging from: 533Sq.ft  
 X to 1,200 Sq.ft  
 Units Available: 6

Unit ID	Unit Size
1201	653
1202	532
2104	1,176
3205	533
3218	533
3220	677



For additional information please contact Hector Gutierrez  
 305-527-7170 or Hector.Gutierrez@imcequitygroup.com

Visit our Website  
[imcequitygroup.com](http://imcequitygroup.com)  
 f t or i in